

Kids Explore!



Come to Your Senses

Draw a line between the marked parts of the critters below and the sense(s) each part is used for...some parts help with more than one sense!

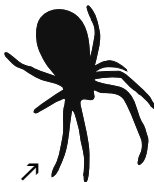


Seeing



Smelling

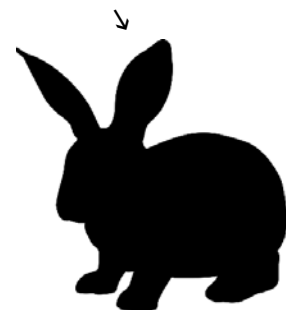
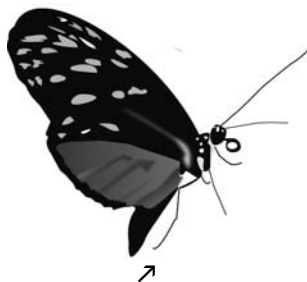
Tasting



Touching



Hearing



Rabbit ears = hear, butterfly feet = taste, spider legs = touch, bat ears = hear, ant antennae = smell/taste/hear, fish skin = touch, eagle eyes = see, grasshopper antennae = touch/smell